

Limbo - FLEXIBLE WORK STATION

Manufactured to meet high hygiene requirements. Adjustable in height with battery operation 24 volts or plug 230 volts. Adapted to hospital environments, commercial kitchens, food manufacturing industry, medicine manufacturers, laboratory. Limbo has flexible solutions for many tasks.

White table top in polyethylene plastic / optional stainless top plate. Powerful telescopic lifting column. Base chassis with braked castors provides optimized room for movement in tight spaces. Complements production lines, fits other machines such as mixers and choppers, cutting machines, lab equipment, process machines.

LIMBO STANDARD & LIMBO MINI 230 VOLT

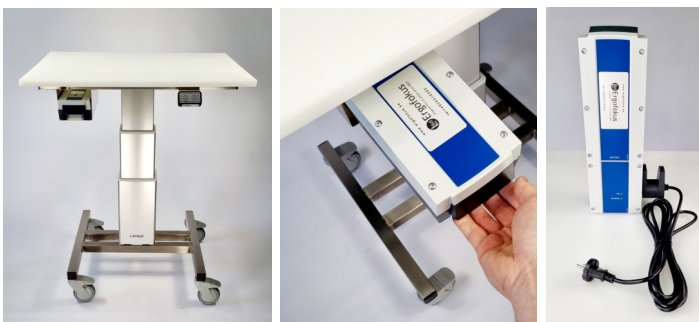
Article 79393 och 79392



- Limbo MINI: 600x450x20 mm LxWxH.
- Limbo STD: 800x650x20 mm LxWxH.
- Height: 570-970 mm.
- Adjustable height: 400 mm.
- Max load: 100 kg.
- Operation: 230 volt EU plug and spiral cable.
- Materials: stainless steel (EN 1.4301), POM, ALU.
- Washable: IPX5.
- Designed and manufactured in Sweden.

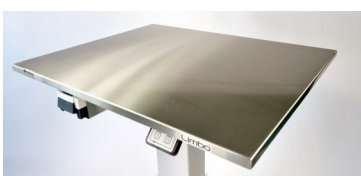
LIMBO 24 VOLT

Article 79391



- Limbo STD: 800x650x20 mm LxWxH.
- Height: 570-970 mm.
- Adjustable height: 400 mm.
- Max load: 100 kg.
- Operation: 24 volt battery charger.
- Materials: stainless steel (EN 1.4301), POM, ALU.
- Washable: IPX5.
- Designed and manufactured in Sweden.

OPTION



79392b stainless steel top cover



79390g GN1/1 frame

